

RANGE RIGHT LTD

YOU HAVE THE CHOICE... WE HAVE THE SOLUTION

KRAL PCP OWNERS MANUAL

NP-02

KRAL WARRANTY

All Kral PCP airguns are fitted with an anti-tamper device. This device is put in place once all quality controls have been carried out and the power level has been set correctly. If you return a Kral PCP with the anti-tamper still in place, the gun will be covered under warranty for any factory faults. However, if the anti-tamper has been removed, any work carried out will be chargeable at the owner's expense.

ABOUT YOUR AIRGUN

All of the components of your airgun have been designed and tested to meet all of the international standards by fully automatic CNC machines using Turkish and Italian steels at the highest quality standards of Kral arms. The information and details in this handbook are valid for the period during which this was printed and 'Kral Arms.' reserves the right to change or cancel the details related to any model without any obligation or warning.



KRAL ARMS

Unit 4, Freemans Way, Harrogate Business Park, Wetherby Road, Harrogate,
North Yorkshire, HG3 1DH

Tel: 01423-881919 Fax: 01423-881717 Email: sales@range-right.co.uk
www.range-right.co.uk

WARNING!

CAUTION!

THIS IS NOT A TOY! FOR AGES 18+ ONLY. IMPROPER USE COULD CAUSE SERIOUS INJURY OR DEATH

CAUTION!

YOUR AIRGUN'S SAFETY SHOULD ALWAYS BE ON, AND YOU SHOULD ONLY TURN OFF THE SAFETY RIGHT BEFORE YOU ARE READY TO TAKE YOUR SHOT

WARNING !

CAUTION !

ONLY CHARGE YOUR CYLINDER WITH AIR FROM A DIVING BOTTLE OR A DEDICATED AIRGUN STIRRUP PUMP. IF USING A STIRRUP PUMP, AVOID RAPID PUMPING AS THIS CAN CAUSE YOUR CYLINDER TO OVER HEAT AND CAN DEVELOP MOISTURE IN THE CYLINDER

CAUTION !

OBEY THE UK LAWS, REGULATIONS AND RULES AND ALWAYS MAKE SURE THAT YOU HAVE PERMISSION TO SHOOT ACROSS LAND THAT IS NOT YOURS

WARNING !

- Never use the airgun if you are intoxicated or under the influence of drugs.
- Even if the pressure gauge reads empty, never disassemble the air cylinder.
- Put the safety on before interacting with the airgun in any way and never point the barrel at yourself or anyone else under any circumstance.
- Only use a cotton dry cloth to clean any dirt inside the barrel for various reasons (humidity, dust, etc.).
- You may find that the grouping of the airgun is not how it should be if the inside of the barrel is not clean.
- Make sure you have a suitable back stop for your pellet, and be aware of your surroundings to ensure you don't cause any damage.
- Do not run or jump with a loaded gun.

WARNING !

ALWAYS REMEMBER THE FOLLOWING PRECAUTIONS

- In the case of storing your airgun over a long period, always keep it de-cocked. (The internal spring is tight when cocked and may weaken over prolonged storage.)
- We do not recommend disassembling and reassembling the airgun unless absolutely necessary. Do not disassemble or replace the original parts of your airgun under any circumstance. Please contact the UK distributor "Range Right Ltd" or your local stockist.
- Always treat your gun as if it is loaded. Even if you are in an empty area of land or forest, make sure that the safety is on and your barrel is pointing in a safe direction. The owner of the airgun will be responsible for any damage.

**THIS REMINDER HAS BEEN WRITTEN TO KEEP YOU AWAY FROM
MISTAKES THAT MIGHT CAUSE INJURIES AND EVEN DEATH.**

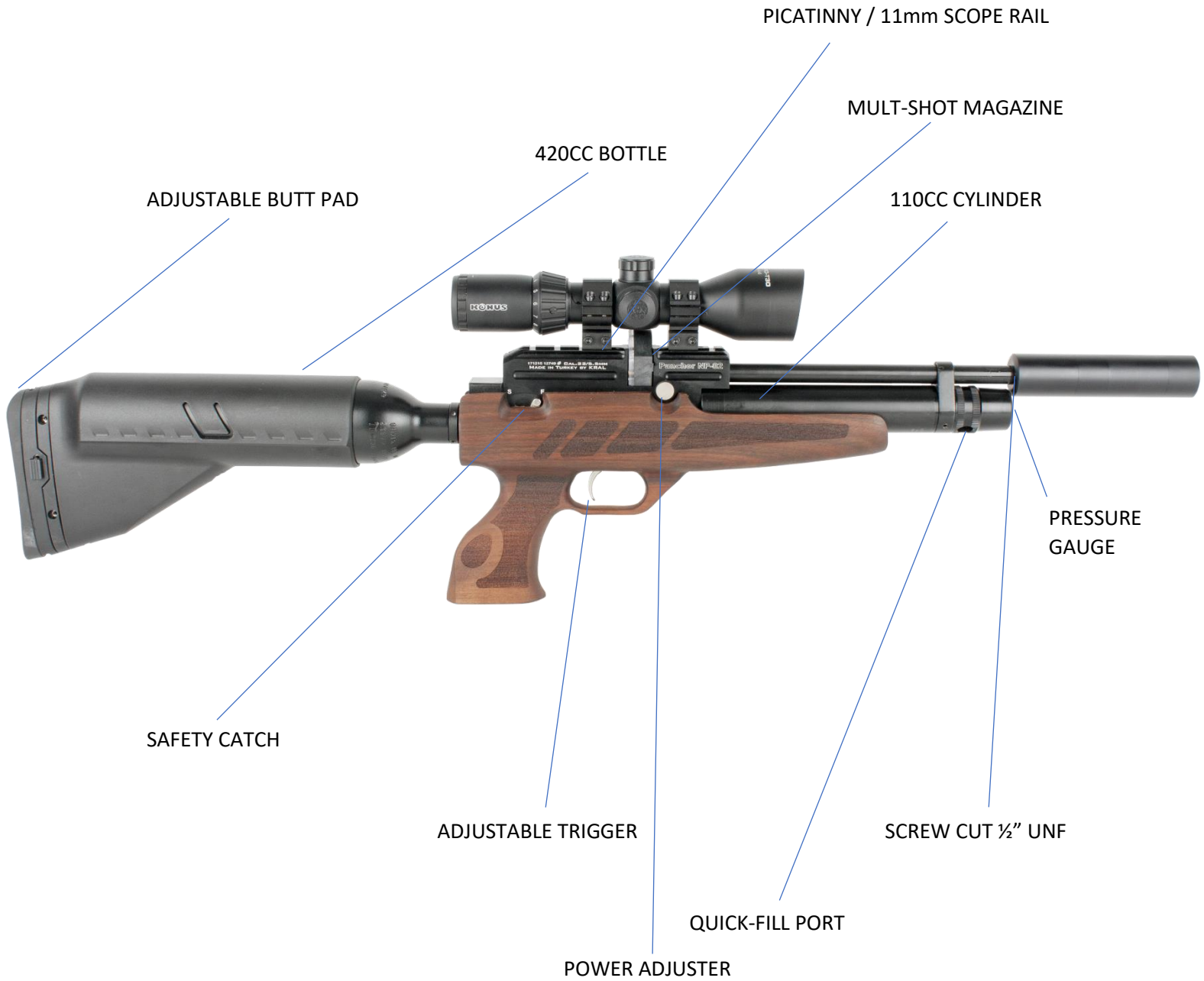
**CAUTION !
DANGER OF EXPLOSION!**

THE AIR TANK POSES THE RISK OF EXPLOSION IF IT OVER HEATS FOR AN EXTENDED PERIOD OF TIME.

(Max. + 40° / Min. -05°)

IF THE CYLINDER IS GETTING HOT, YOU SHOULD LEAVE IT TO COOL DOWN IN A COOL ENVIRONMENT.

GENERAL NP-02 DIAGRAM



GENERAL MAINTENANCE INFORMATION

TRIGGER ADJUSTMENT

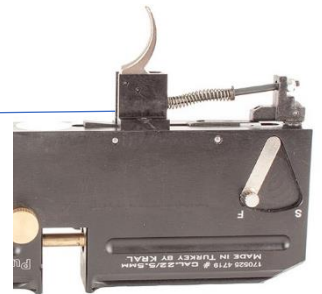
There are two basic trigger adjustments on the Kral NPO2. The first adjusts the length of pull and is done by winding in/out the M3 nyloc nut on the end of the trigger rod (see picture left). Over adjustment of this can render the safety inoperable if too tight.

The second adjustment is made on the hammer sear and involves screwing in or out an M3 grub screw (see picture right), this increases or decreases the amount of contact the sear has on the hammer and is quite sensitive. Be careful not to set this too light as it will make the trigger unsafe.

M3 NYLOC NUT



M3 GRUB SCREW



SAFETY



Safety 'F' position means ready to fire (see picture left)

Safety 'S' position means the gun is safe and is not ready to fire (safety see picture right)



REMOVING THE STOCK



You can remove the stock by simply removing the Allen bolt using a 4mm Allen key.

GENERAL MAINTENANCE INFORMATION

MAGAZINE PLACEMENT

The magazine can only be inserted from the right-hand side (see right-hand image). With the safety on, pull the cocking lever all the way back so that the lever locks open (see left-hand image). The clear side of the magazine faces the rear of the gun. When all pellets have been fired, you will not be able to close the bolt without taking the magazine out.



POWER ADJUSTMENT

The power adjuster is fitted to the right-hand side of the rifle. This adjustment dial only makes a significant difference in power levels if your gun is a section 1 firearm (over 12ft-lbs)



SINGLE SHOT OPTION

The single shot tray that comes complete with your rifle, inserts exactly the same way as the multi shot magazine



GENERAL MAINTENANCE INFORMATION

FILLING YOUR AIR CYLINDER



The filling port is located at the top of the air cylinder. Use the supplied fill probe only. Spare O-rings are supplied as standard, keep O-rings lubricated with silicone oil / grease. Do not fill above 200 bar.



To fill using a diving cylinder, ensure the hose is fastened securely and you have inserted the probe into the fill port. Close the bleed valve by turning it clockwise and slowly open the main valve anti-clockwise. Continue to fill until the gauge on the diving cylinder reads 200 bar and then close the main valve by turning it clockwise. Before you remove the fill probe you must release the pressure in the hose by turning the bleed valve anti-clockwise. Once you have done this the probe is safe to remove and the rifle is ready to be used.



To fill using the Kral stirrup pump, ensure the hose is fastened securely and you have inserted the probe into the fill port. Close the bleed valve by turning it clockwise and slowly begin to pump, once you feel the pump is under pressure, pump the handle 5 or 6 times and then release the excess air by turning the bleed valve anti-clockwise. Repeat this process until the gauge on the pump reads 200 bar and then release the excess pressure before you remove the fill probe.

LOADING THE MAGAZINE



1



2



3

Rotate the front cover in the direction of the arrow (clockwise) until it stops (see picture 3).
Prevent forcing it further as this will break the spring inside.



4



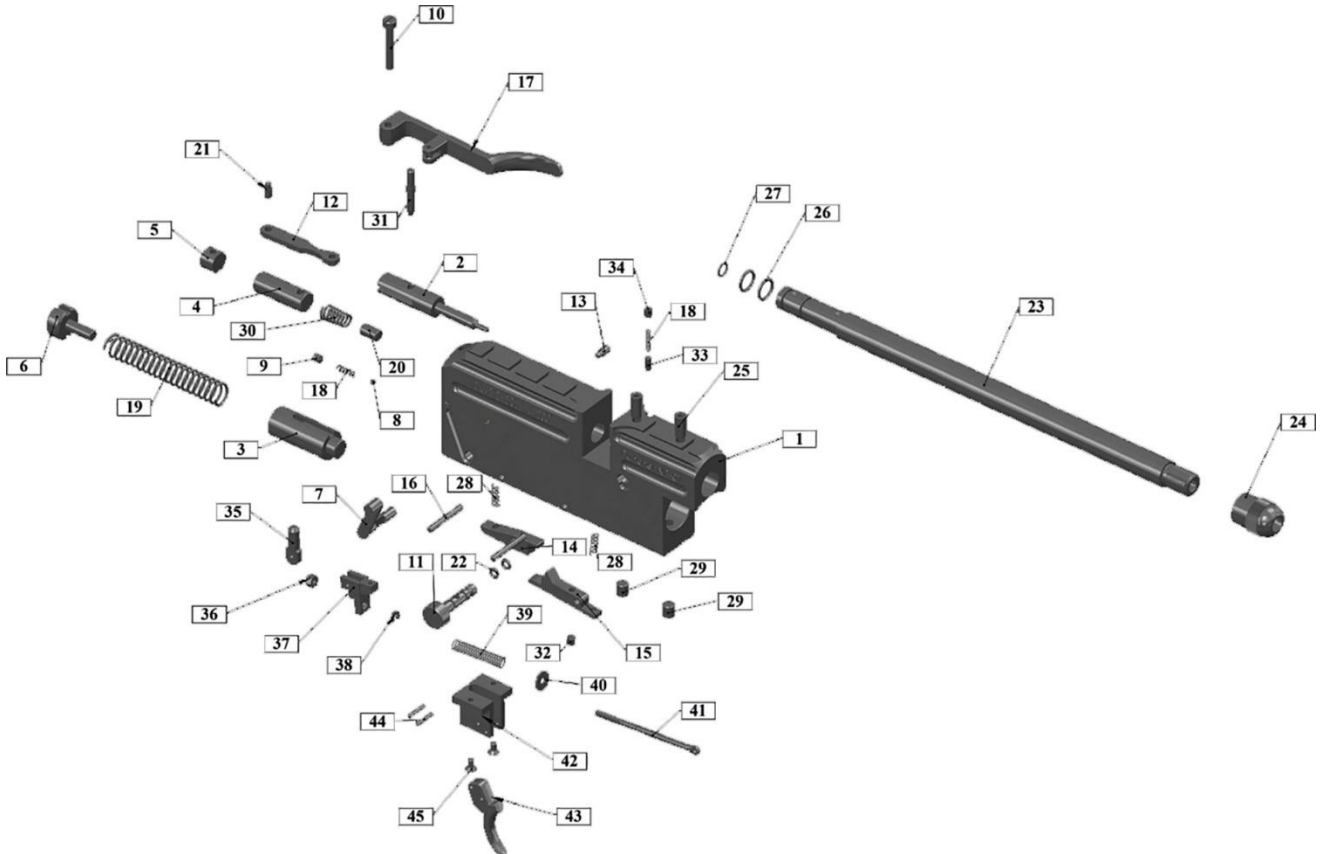
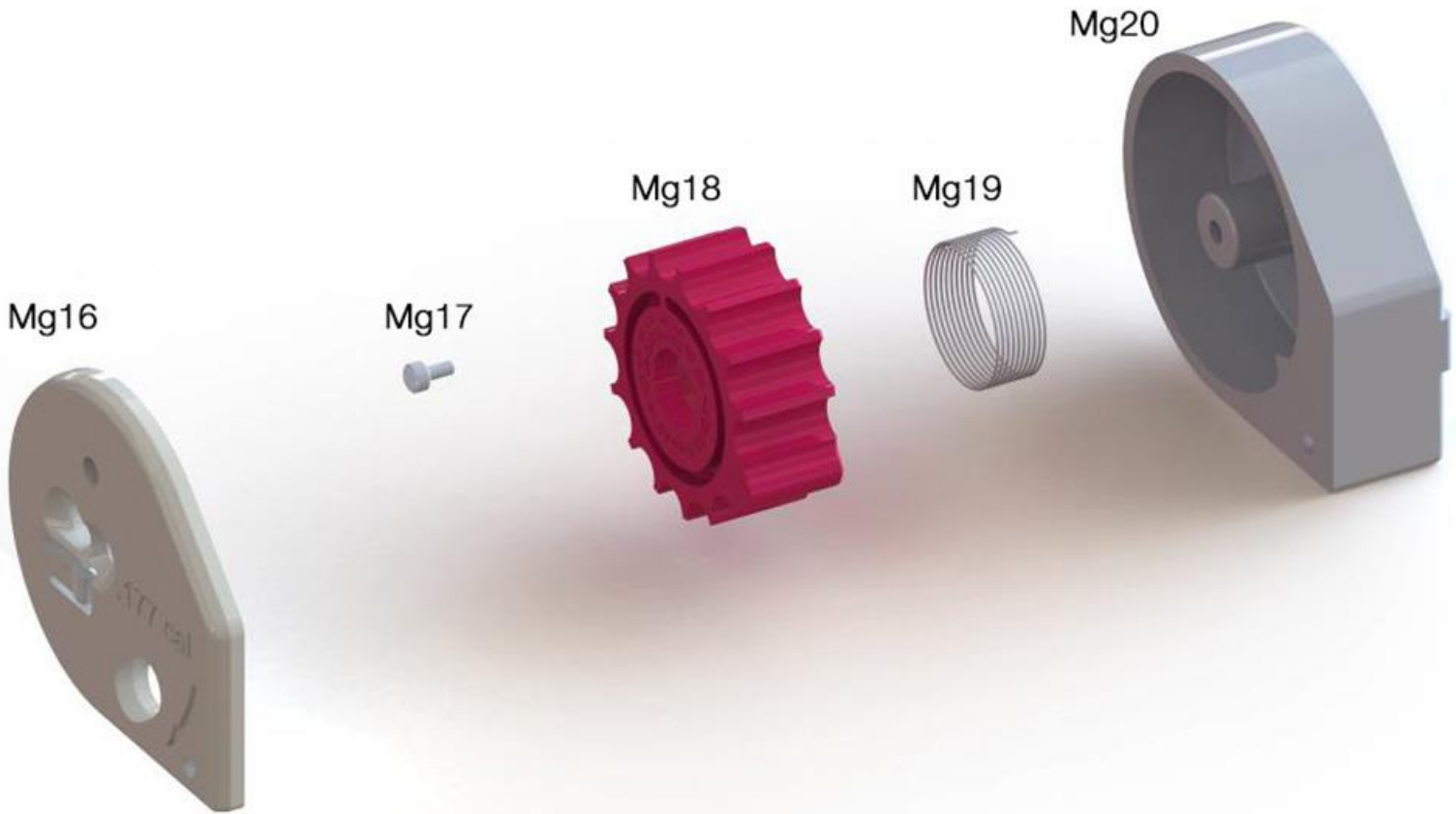
5



6

Insert the first pellet (see picture 4) and rotate the front cover counter clockwise, inserting pellets as you do so. Once you return the front cover to its starting position and it is fully loaded, you are ready to use it.

MAGAZINE & MAIN BODY PARTS AND PART NUMBERS



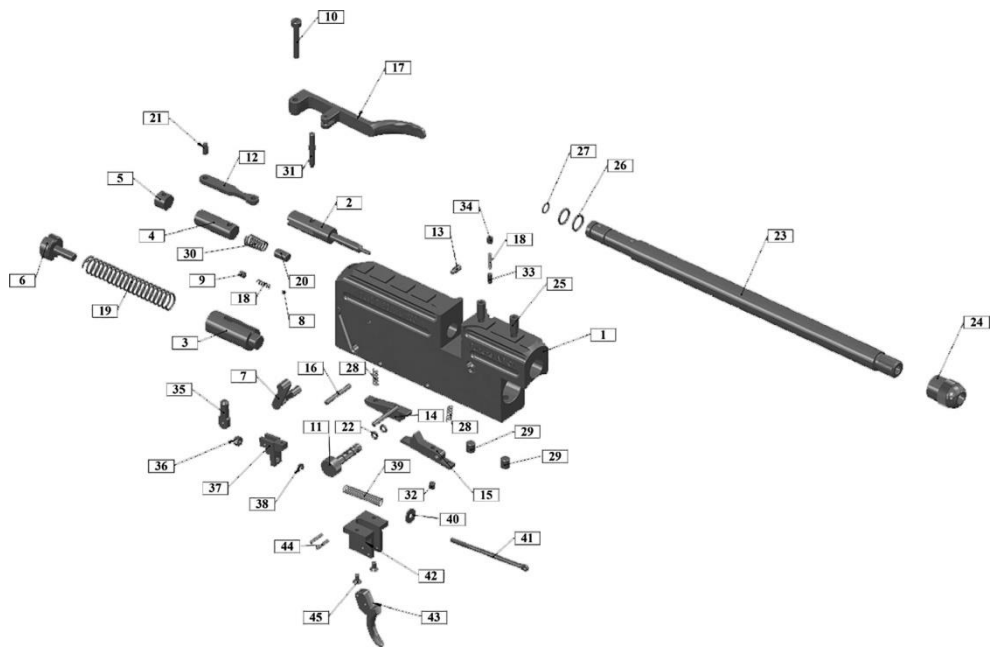
PARTS LIST

MAGAZINE PARTS

MG16 – FRONT COVER
 MG17 – CENTRAL SCREW
 MG18 – CENTRAL WHEEL
 MG19 – COIL SPRING
 MG20 – MAGAZINE HOUSING

AIR CYLINDER COMPONENTS

AT01 – AIR CYLINDER
 AT02 – VALVE BLOCK
 AT03 – FILLING BLOCK
 AT04 – NEEDLE (REAR)
 AT05 – NEEDLE (FRONT)
 AT06 – VALVE NEEDLE FIBRE WASHER
 AT07 – VALVE BEARING
 AT08 – VALVE
 AT09 – VALVE BLOCK NUT
 AT10 – NEEDLE SPRING
 AT11 – VALVE SPRING
 AT12 – MOISTURE DUST COVER
 AT13 – PRESSURE GAUGE
 AT14 – FILLING BLOCK BACK RING
 AT15 – VALVE BLOCK EXTERNAL O-RING
 AT16 – FILLING BLOCK EXTERNAL O-RING
 AT17 – OVER PRESSURE DISCHARGE SEAL
 AT18 – OVER PRESSURE COPPER DISC
 AT19 – OVER PRESSURE DISCHARGE VALVE



MAIN BODY COMPONENTS

01- BODY	29 – FRONT TUBE FIXING SET SCREW
02- NEEDLE	30 – CYLINDER SPRING
03- HAMMER	31 – PULLEY PIN
04- REAR SETTING CYLINDER	32 – INTERNAL CONTACT PIN
05- LEVEL FIXING NUT	33 – SAFETY SET PIN
06- DRIVE ADJUSTMENT NUT	34 – SAFETY SET SCREW
07- SAFETY LATCH	35 – TRIGGER HOLDER
08- SAFETY BALL	36 – TRIGGER SETTING NUT
09- FIXING GRUB	37 – TRIGGER DRIVE PART
10- LEVEL FIXING SCREW	38 – TRIGGER ADJUSTMENT
11- POWER ADJUSTMENT VALVE	39 – TRIGGER SPRING
12- PULLEY	40 – TRIGGER SPRING PIN
13- HEX AXIS SCREW	41 – TRIGGER ADJUSTMENT SCREW
14- TRIGGER	42 – TRIGGER BED PART
15- INTERNAL TRIGGER	43 – TRIGGER TEETH
16- HAMMER HOLDING PIN	44 – TRIGGER CONNECTION PINS
17- SIDE LEVER	45 – TRIGGER JOINT CONNECTION VALVES
18- SAFETY SPRING	
19- HAMMER SPRING	
20- FRONT HAMMER GRUB	
21- PULLEY RETAINING PIN	
22- PRESSURE ADJUSTMENT VALVE O-RING	
23- BARREL	
24- BARREL HEAD	
25- BARREL FIXING	
26- BARREL OUTER O-RING	
27- BARREL INTERNAL O-RING	
28- TRIGGER SPRING	